



## SKI-DOO KIT - LinQ Fuel Caddy - 3 Gallons

Product: **Ski-Doo**

Project no: **487803640**

Instruction Sheet P/N: **487803640**

Revision no:

Revision date:

Item covered: **LinQ Fuel Caddy — 3 Gallons**

The following symbols may be used in this document:



DANGER

Indicates a hazardous situation which, if not avoided, will result in serious injury or death.



WARNING

Indicates a hazardous situation which, if not avoided, could result in death or serious injury.



CAUTION: Indicates a hazard situation which, if not avoided, could result in minor or moderate injury.

NOTICE Indicates an instruction which, if not followed, could severely damage vehicle components or other property.

NOTE: The illustrations in this document show typical construction of the different assemblies and may not reproduce the full detail or exact shape of the parts; however, they represent parts that have the same or similar function.



WARNING

- This kit is designed for specific applicable models only (authorized BRP dealers will confirm model(s)). It is not recommended for units other than the one (those) for which it was sold.
- If the installation of the kit requires a template, ensure template is to scale.
- Should removal of a locking device (e.g. lock tabs, self-locking fasteners, etc.) be required when undergoing disassembly/assembly, always replace with a new one.
- Torque wrench tightening specifications must strictly be adhered to.



WARNING

Some important safety information and/or operating instructions dedicated to the end user might be included in this instruction sheet. Make sure to give the kit part number as well as the instruction sheet included with this kit to the customer. Verify that the customer has access to all the information required for proper use of the accessory.

NOTE: USE TIGHTENING TORQUES IN THE FOLLOWING TABLE IF NOT OTHERWISE SPECIFIED.

GRADE		5.8	8.8	10.9	12.9
M4	1.8 ± 0.2 N•m (16 ± 2 lbf•in)	2.8 ± 0.2 N•m (25 ± 2 lbf•in)	3.8 ± 0.2 N•m (34 ± 2 lbf•in)	4.5 ± 0.5 N•m (40 ± 4 lbf•in)	

M5	3.3 ± 0.2 N•m (29 ± 2 lbf•in)	5 ± 0.5 N•m (44 ± 4 lbf•in)	7.8 ± 0.7 N•m (69 ± 6 lbf•in)	9 ± 1 N•m (80 ± 9 lbf•in)
M6	7.5 ± 1 N•m (66 ± 9 lbf•in)	10 ± 2 N•m (89 ± 18 lbf•in)	12.8 ± 2.2 N•m (113 ± 19 lbf•in)	16 ± 2 N•m (142 ± 18 lbf•in)
M8	15.3 ± 1.7 N•m (135 ± 15 lbf•in)	24.5 ± 3.5 N•m (18 ± 3 lbf•ft)	31.5 ± 3.5 N•m (23 ± 3 lbf•ft)	40 ± 5 N•m (30 ± 4 lbf•ft)
M10	29 ± 3 N•m (21 ± 2 lbf•ft)	48 ± 6 N•m (35 ± 4 lbf•ft)	61 ± 9 N•m (45 ± 7 lbf•ft)	73 ± 7 N•m (54 ± 5 lbf•ft)
M12	52 ± 6 N•m (38 ± 4 lbf•ft)	85 ± 10 N•m (63 ± 7 lbf•ft)	105 ± 15 N•m (77 ± 11 lbf•ft)	128 ± 17 N•m (94 ± 13 lbf•ft)
M14	85 ± 10 N•m (63 ± 7 lbf•ft)	135 ± 15 N•m (100 ± 11 lbf•ft)	170 ± 20 N•m (125 ± 15 lbf•ft)	200 ± 25 N•m (148 ± 18 lbf•ft)
M16	126 ± 14 N•m (93 ± 10 lbf•ft)	205 ± 25 N•m (151 ± 18 lbf•ft)	255 ± 30 N•m (188 ± 22 lbf•ft)	305 ± 35 N•m (225 ± 26 lbf•ft)
M18	170 ± 20 N•m (125 ± 15 lbf•ft)	273 ± 32 N•m (201 ± 24 lbf•ft)	330 ± 25 N•m (243 ± 18 lbf•ft)	413 ± 47 N•m (305 ± 35 lbf•ft)

NOTE: The illustrations in this document show typical construction of the different assemblies and may not reproduce the full detail or exact shape of the parts; however, they represent parts that have the same or similar function.

Installation time is approximately 0.1 hour.

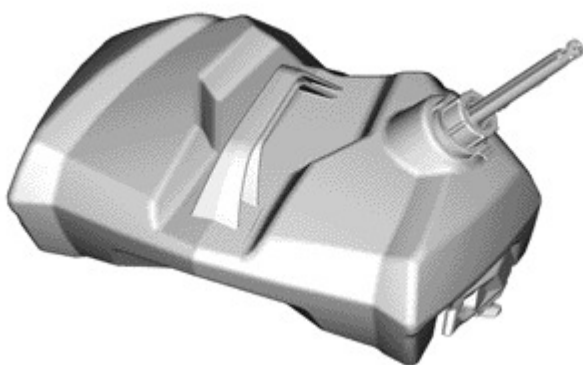


**WARNING**

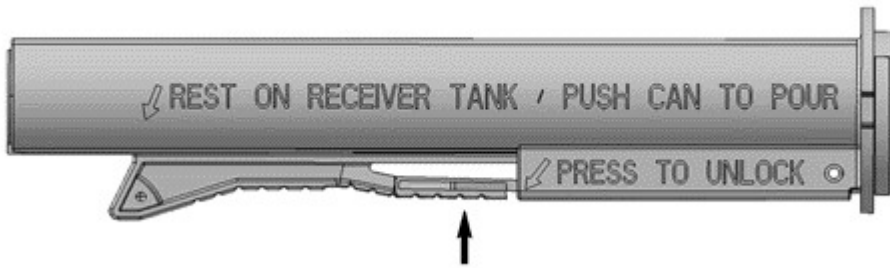
Any person who intends to use one of these related products should read and understand any DANGER, WARNING, CAUTION or NOTICE information contained directly on the product or on affixed labels before doing so.

Fuel Caddy Spout

#### **epa spout**



1. Press on the lever to unlock the filler neck.



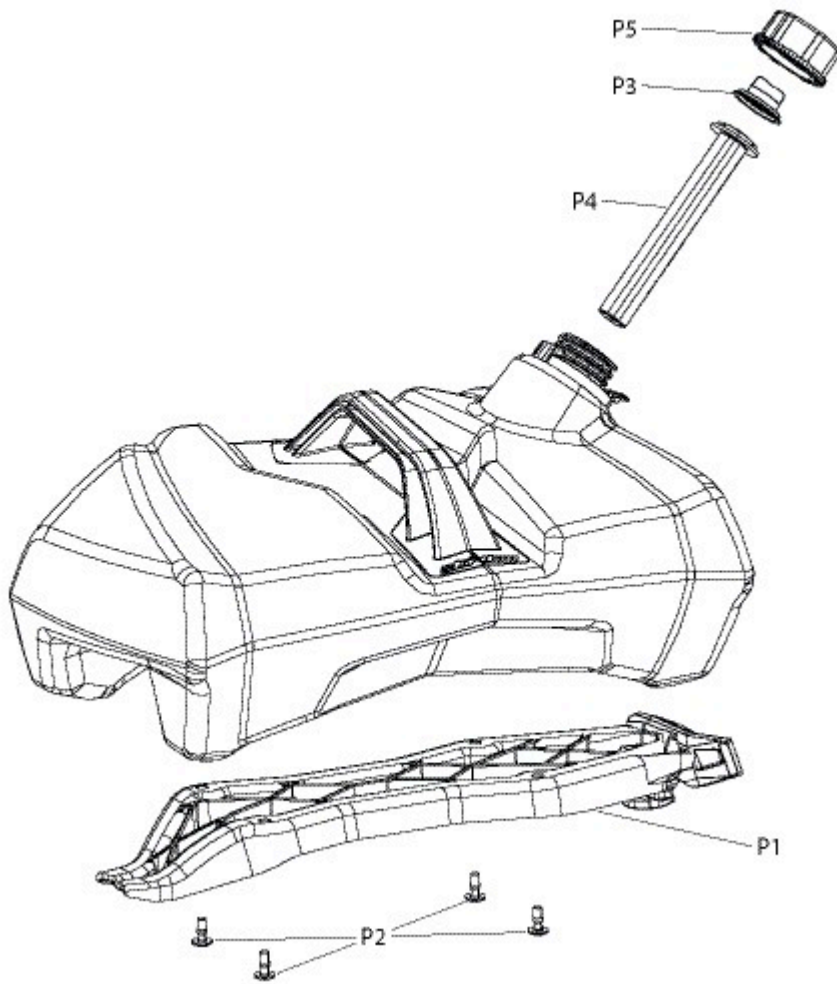
2. Place the actuator of the filler neck on the rim of container where the fuel is poured.



3. The filler neck is going to open and the fuel is going to flow freely.

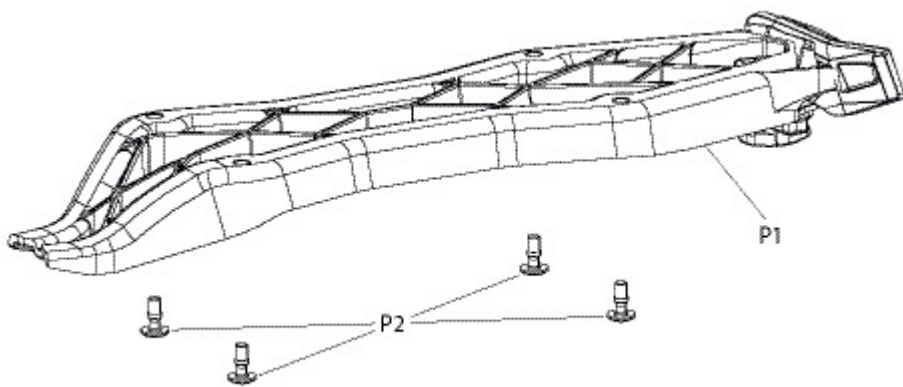


When the pressure on the actuator is interrupted, the filler neck is going to go back to its initial position and preventing the fluid to flow by itself.



**Spare parts list**

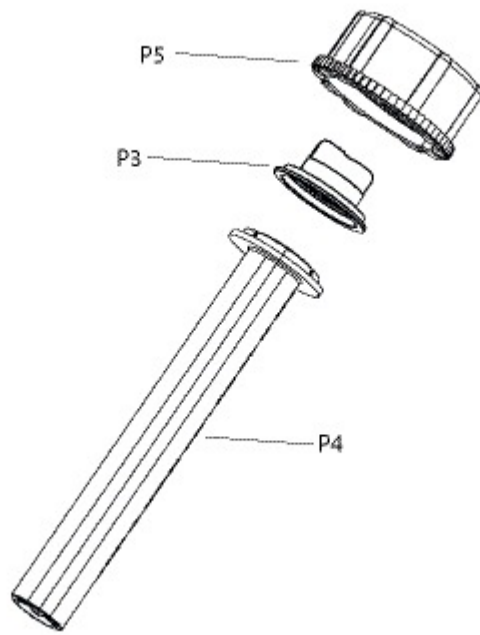
DESCRIPTION	PART NUMBER	ITEM	KIT DESCRIPTION	QTY
Replacement base kit	860202528	P1	Fuel Caddy Base Assembly	1
		P2	M6 x 16 Torx Screw	4



EPA Filler neck kit	860202529	P3	Cap	1
		P4	Filler neck	1
		P5	Fuel tank cap	1

## Spare parts list

DESCRIPTION	PART NUMBER	ITEM	KIT DESCRIPTION	QTY
-------------	-------------	------	-----------------	-----



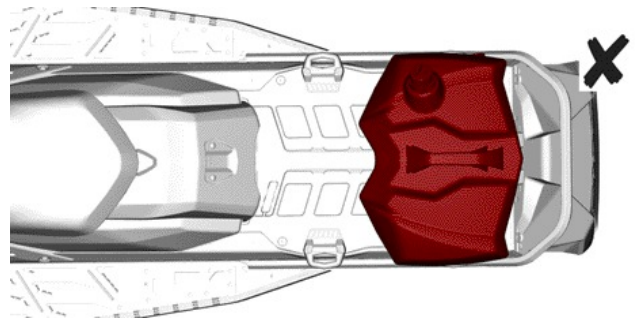
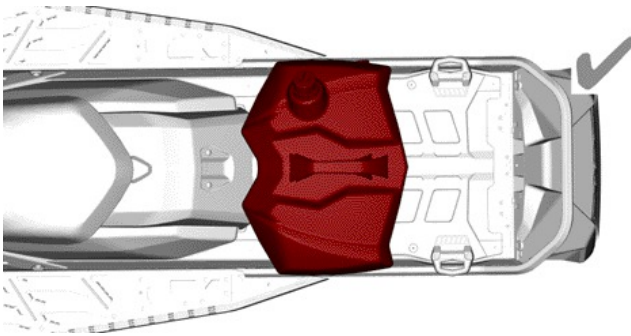
Allowable installation Location

(Models with track of 3.5 m (137 in) and longer)



Always respect the maximum cargo load indicated on the warning label located on rear of tunnel.

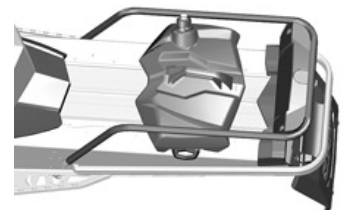
FUEL CADDY



Models With Rear Rack

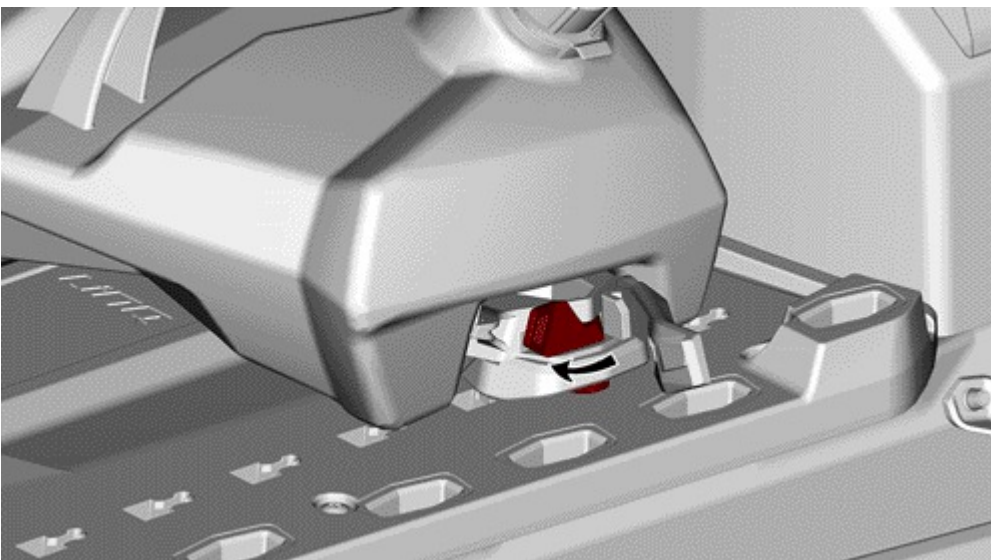
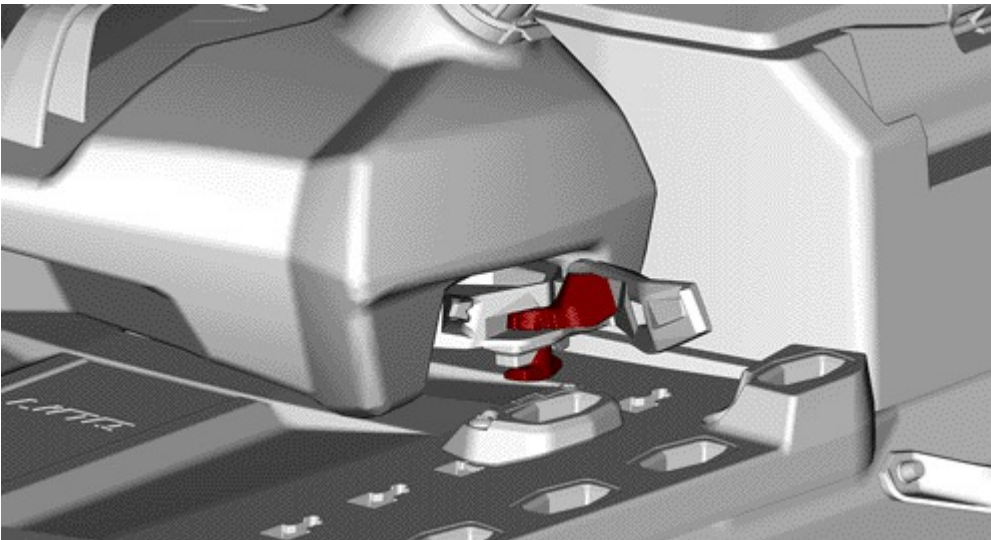
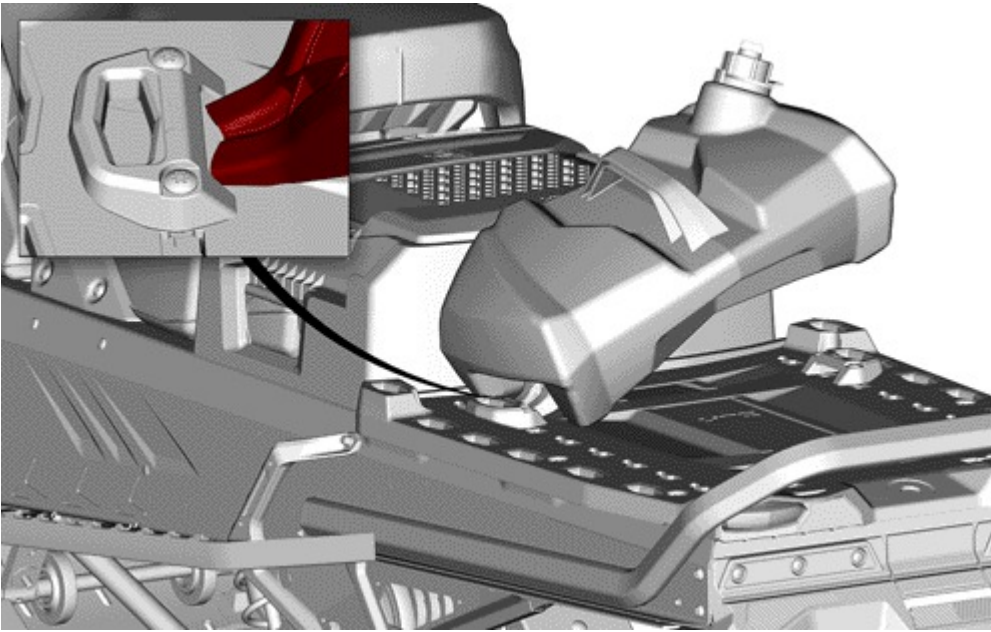
FUEL CADDY

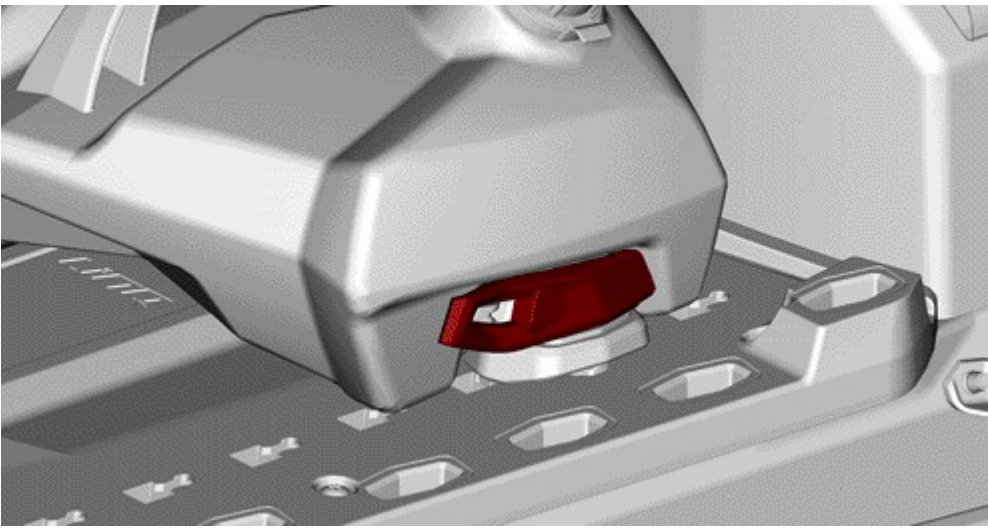
- The fuel caddy cannot be used if the luggage rack reinforcement plates kit (P/N 860200418) is already installed.



Fuel caddy installation

NOTE: Always install the fuel caddy neck on the RH side of the vehicle.

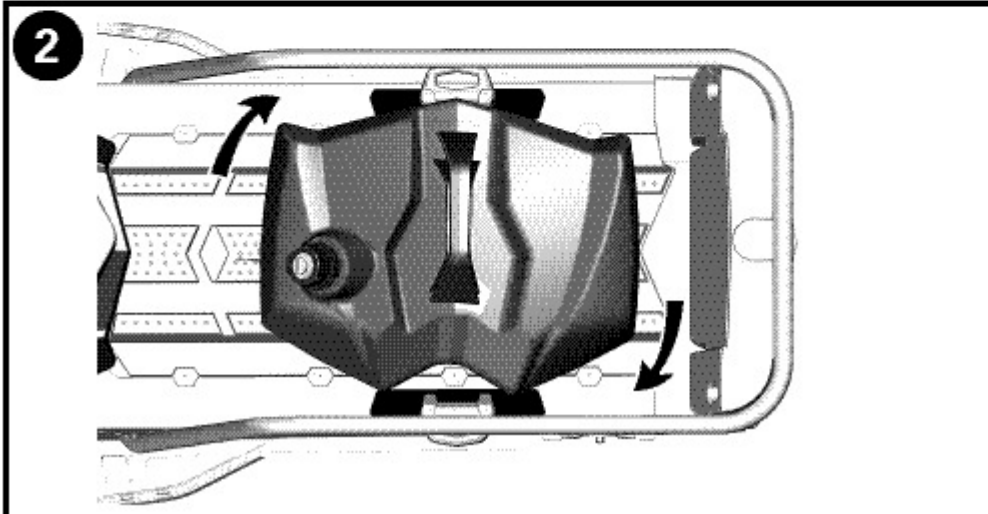
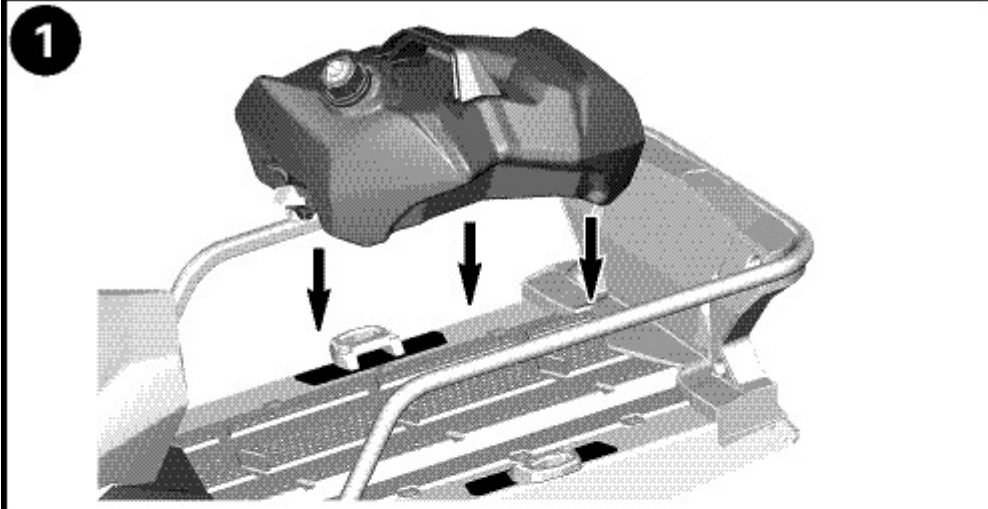




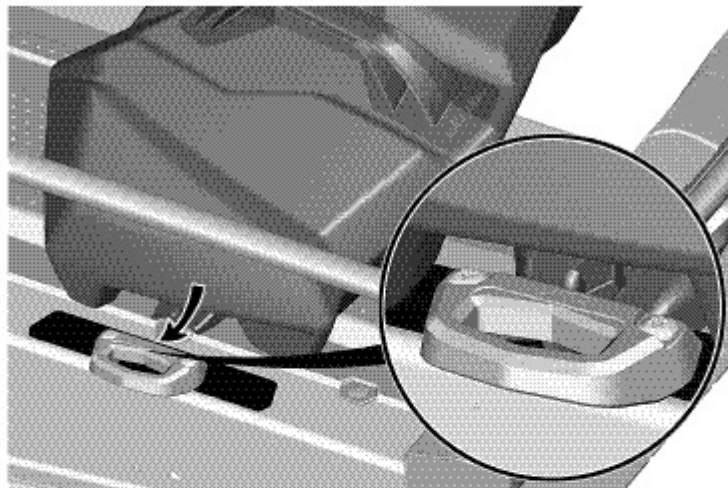
**NOTICE** Make sure to remove all ice/snow before securing LinQ mechanism. To make snow/ice removal easier, let the snowmobile engine run for a short while so the tunnel gets warm.

Fuel caddy installation  
(vehicle with rear rack)

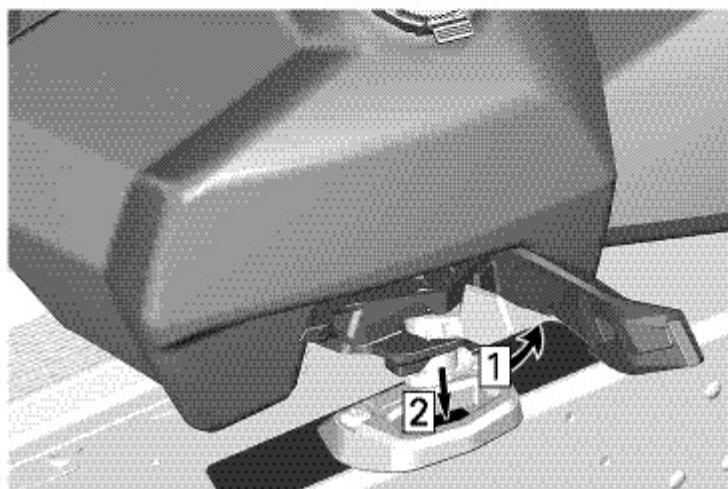
**NOTE:** Always install the fuel caddy neck on the RH side of the vehicle.



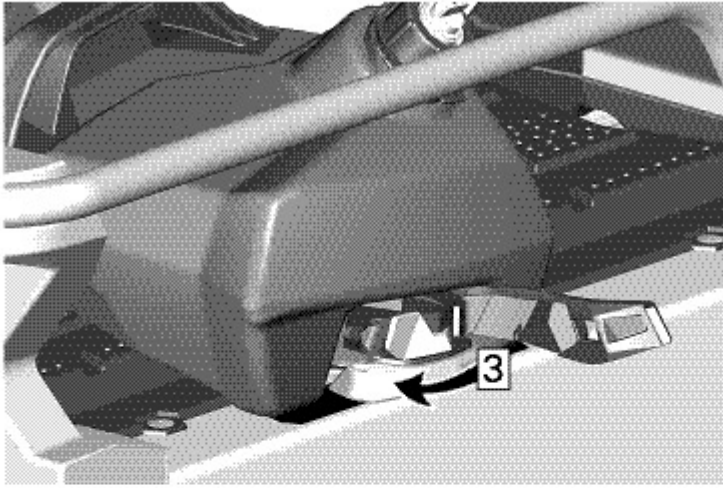
3



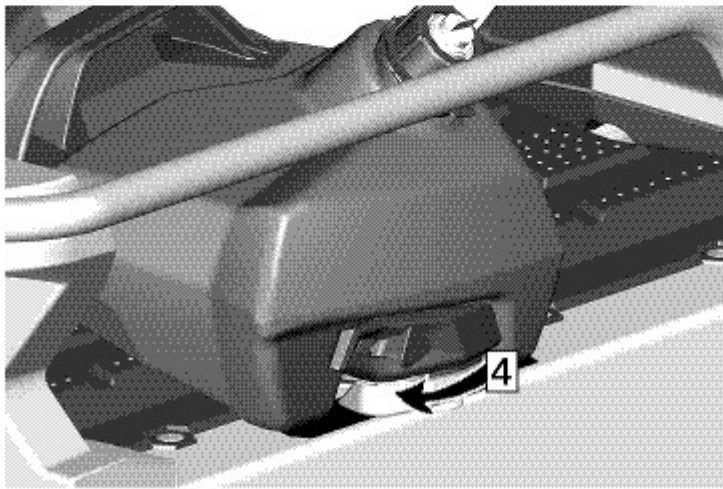
4



5



6



NOTICE Make sure to remove all ice/snow before activating LinQ mechanism. To make snow/ice removal easier, let the snowmobile engine run for a short while so that the tunnel get warms.